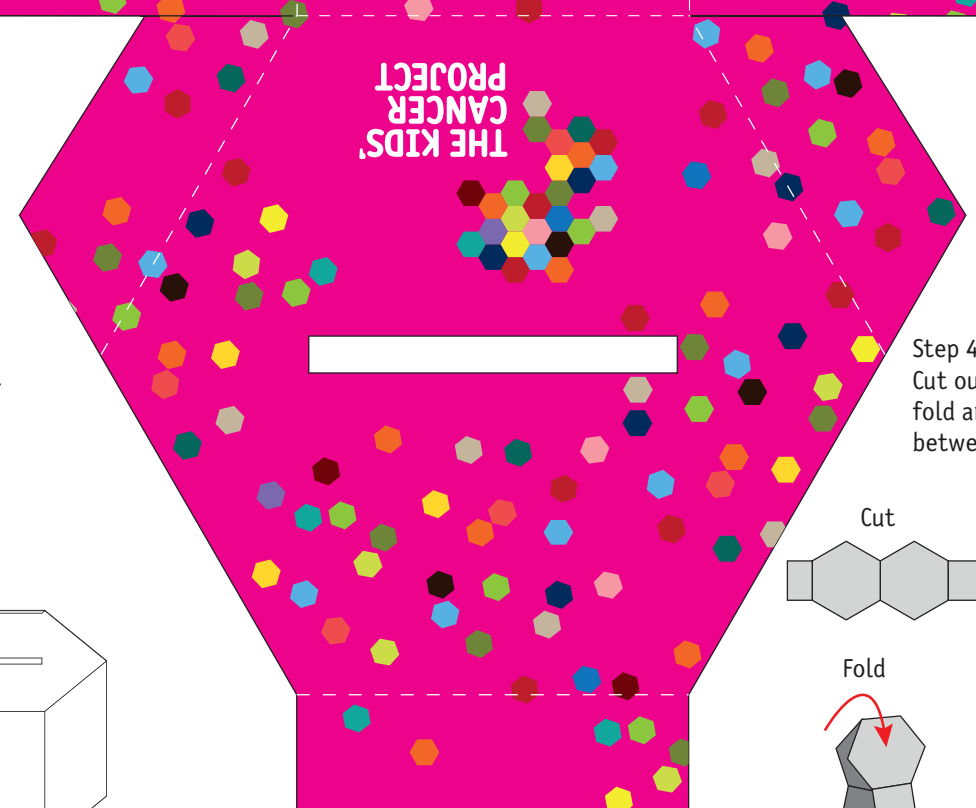
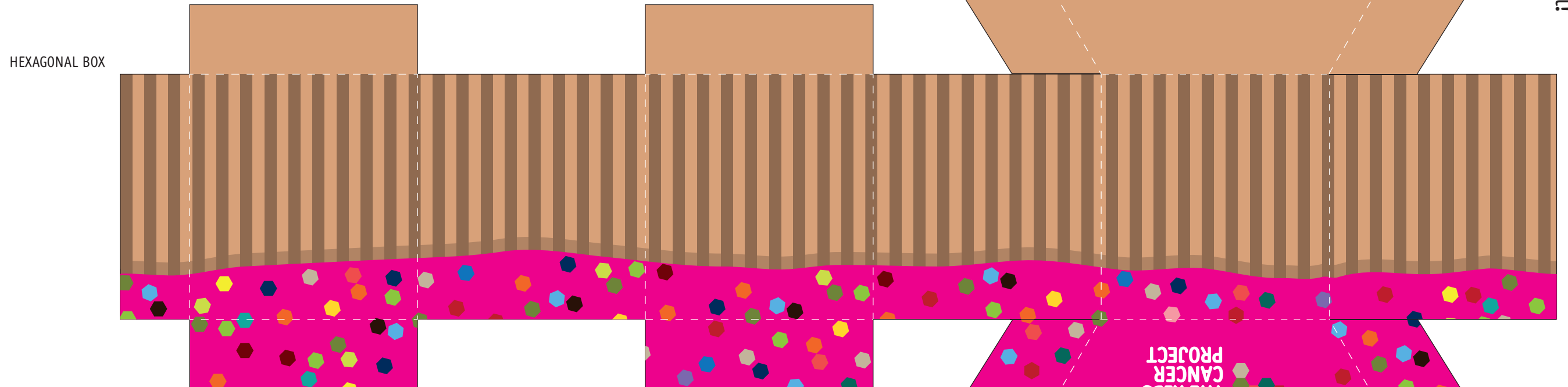
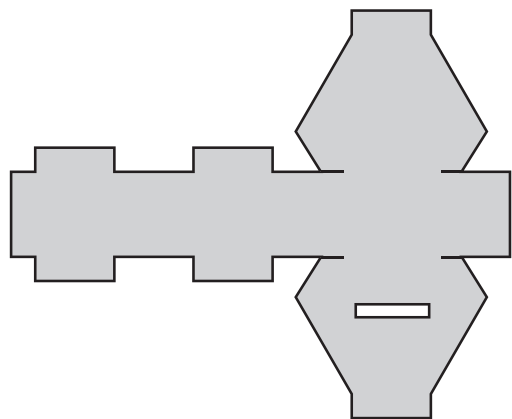


DONATION BOX  
Print on A3 card – 200gsm is ideal!

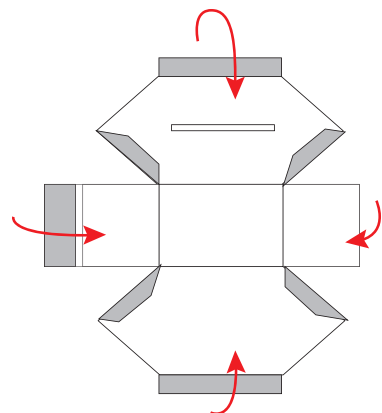


To make the box:

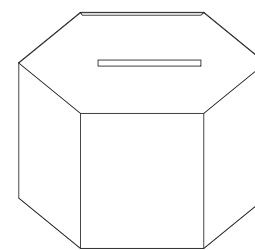
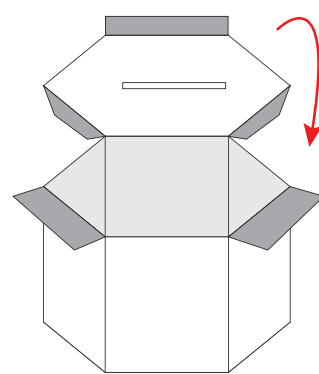
Step 1: Cut out box shape along BLACK lines.  
Coin slot is best cut with a craft knife.



Step 2: Place the shape printed side down.  
Fold the WHITE DOTTED LINES inward so that  
the box forms with the printing on the outside.



Step 3: Use sticky tape, double sided tape or  
glue to close the tabs and form the box.



Step 4: Cut out header card,  
fold and slip into gap  
between lid and side of box.

